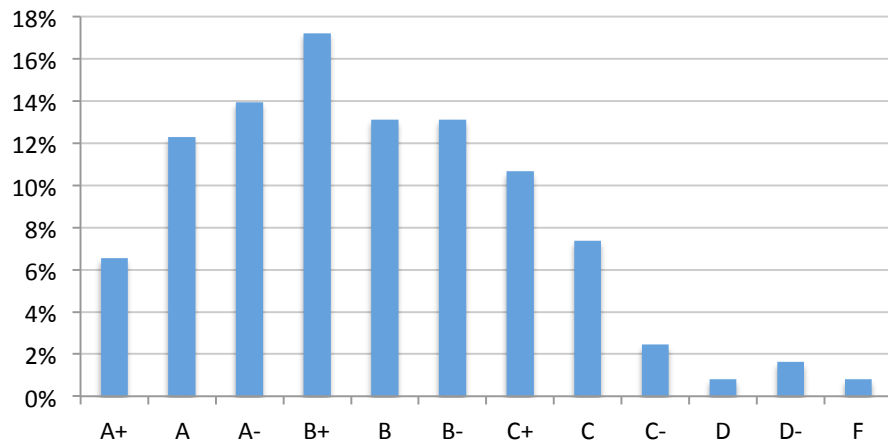


Grade distribution

A+	7%
A	12%
A-	14%
B+	17%
B	13%
B-	13%
C+	11%
C	7%
C-	2%
D	1%
D-	2%
F	1%

Grade distribution



Final exam (out of 100)

Mean	67.7
Median	70.6
Max	99.4
Min	10.6
S.D.	18.9